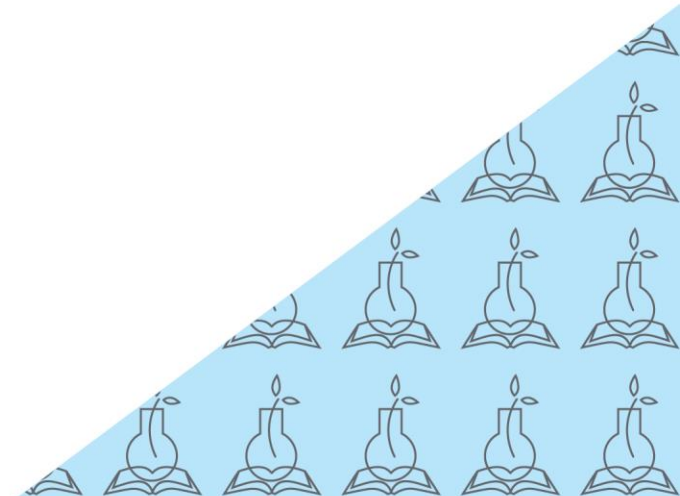


Introducing the NIH Emerging Talent Program

NIH Training Center
Workforce Support and Development Division
Office of Human Resources



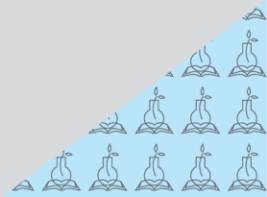
Julian Brooks

NIHTC Program Manager
Emerging Talent Program

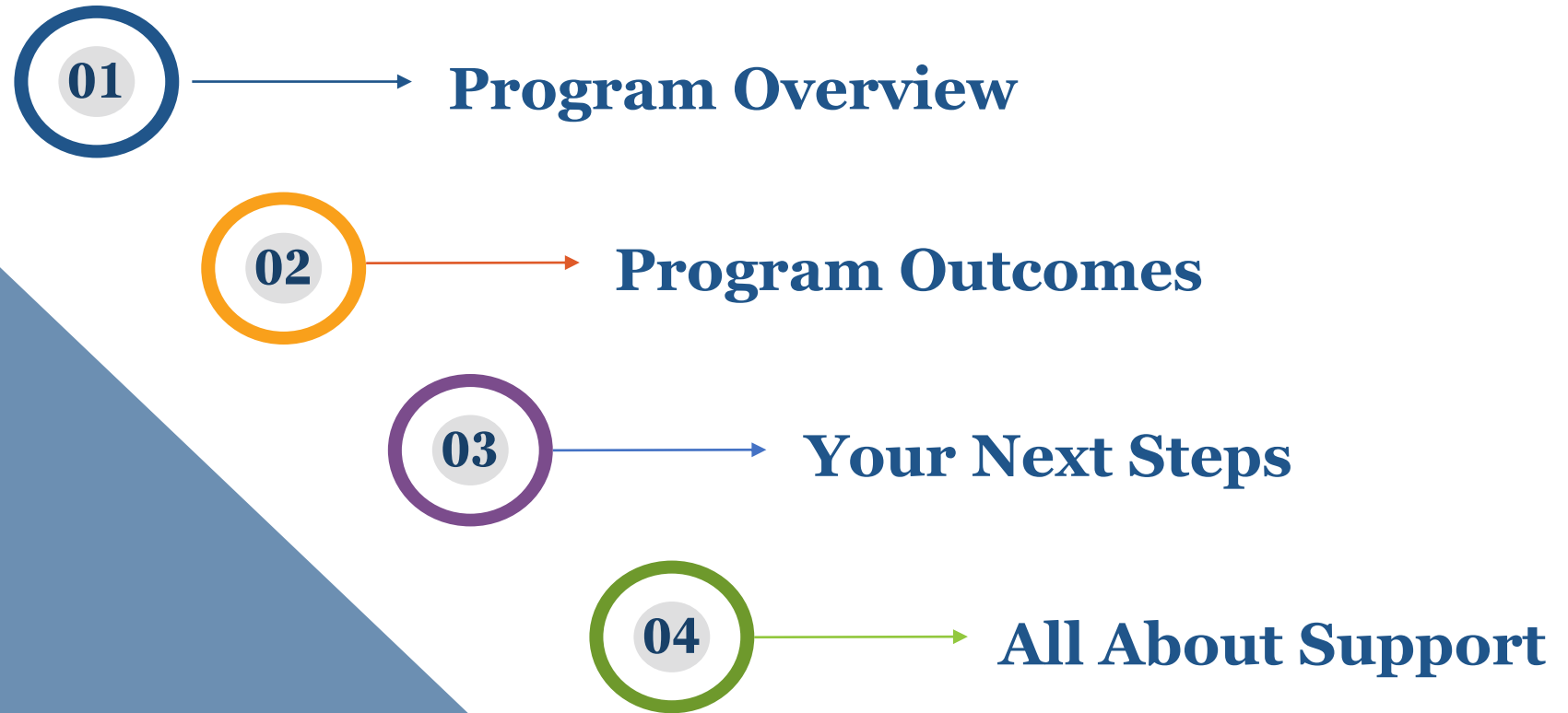


Pam Welbon

NIHTC Programs Unit Chief



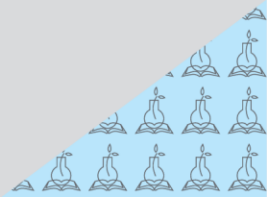
AGENDA



NIHTC Programs, Classes & Services

| Junior Level | | | | Mid Level | | Senior Level | | Executive |
|-----------------|--|---------------------------------|-------|----------------------|------------------------------|--------------------|----------------------|-----------|
| GS- 5/6 | GS- 7/8 | GS- 9/10 | GS-11 | GS-12 | GS-13 | GS-14 | GS-15 | + |
| Emerging Talent | | | | | | | | |
| | Management Intern | | | | | | | |
| | | Presidential Management Fellows | | | | | | |
| | | | | Mid-Level Leadership | | | | |
| | | | | | | Senior Leadership | | |
| | | | | | | | Executive Leadership | |
| | | | | | | Executive Coaching | | |
| | | | | Supervisory Training | | | | |
| | | | | | Women in Leadership | | | |
| | | | | | Internal Leadership Coaching | | | |
| | Management Seminar Series | | | | | | | |
| | Deputy Director for Management Seminar Series | | | | | | | |
| | Open and Closed Enrollment Classes & Independent Development Plan Consulting | | | | | | | |

| Legend | | |
|--------|----------------------|--|
| | 2- Year FTE Position | |
| | Cohort Programs | |
| | Individual Training | |



P rogram Overview



Two program cohorts in 2024

- Cohort 1: Blended (mostly in-person) begins February 26
- Cohort 2: Blended (mostly virtual) begins April 22



Six-month program

- 2 days per month



30 participants per program

- GS 5-11, Wage Grade, and T42
- IC Representation

LMS Approval



2024 Tuition

- Approximately \$2800

Logistics

Emerging Talent Program Topics And Timeline

COHORT 1

Orientation/
Kick-Off

February 26-27*
2024

Federal Career
Mgmt.
March*

Emotional
Intelligence
April*

Communications
May*

Performance Mgmt.
June

Networking/DEIA
July*

COHORT 2

Orientation/
Kick-Off

April 22-23*
2024

Federal Career
Mgmt.
May

Emotional
Intelligence
June

Communications
July

Performance Mgmt.
August

Networking/DEIA
September

NIH Experiences & Individualized Support



Individual
Development Plans

Mission Connection
Experiences



NIH Career Success
Speakers

ETP Candidate Requirements/Considerations

GS 5-11
(Wage Grade and
T42 equivalents)

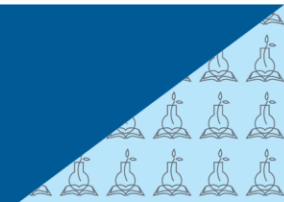
**Permanent
Federal
Employees**

**Non-
Pathways**

**Displays
inclusive
behaviors**

**Embraces
challenges as
opportunities**

**Desire for
growth and
advancement**



ETP Outcomes



Career Advancement/Growth

+

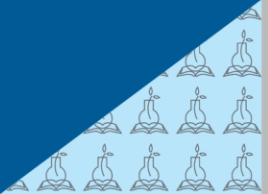


Networking Opportunities

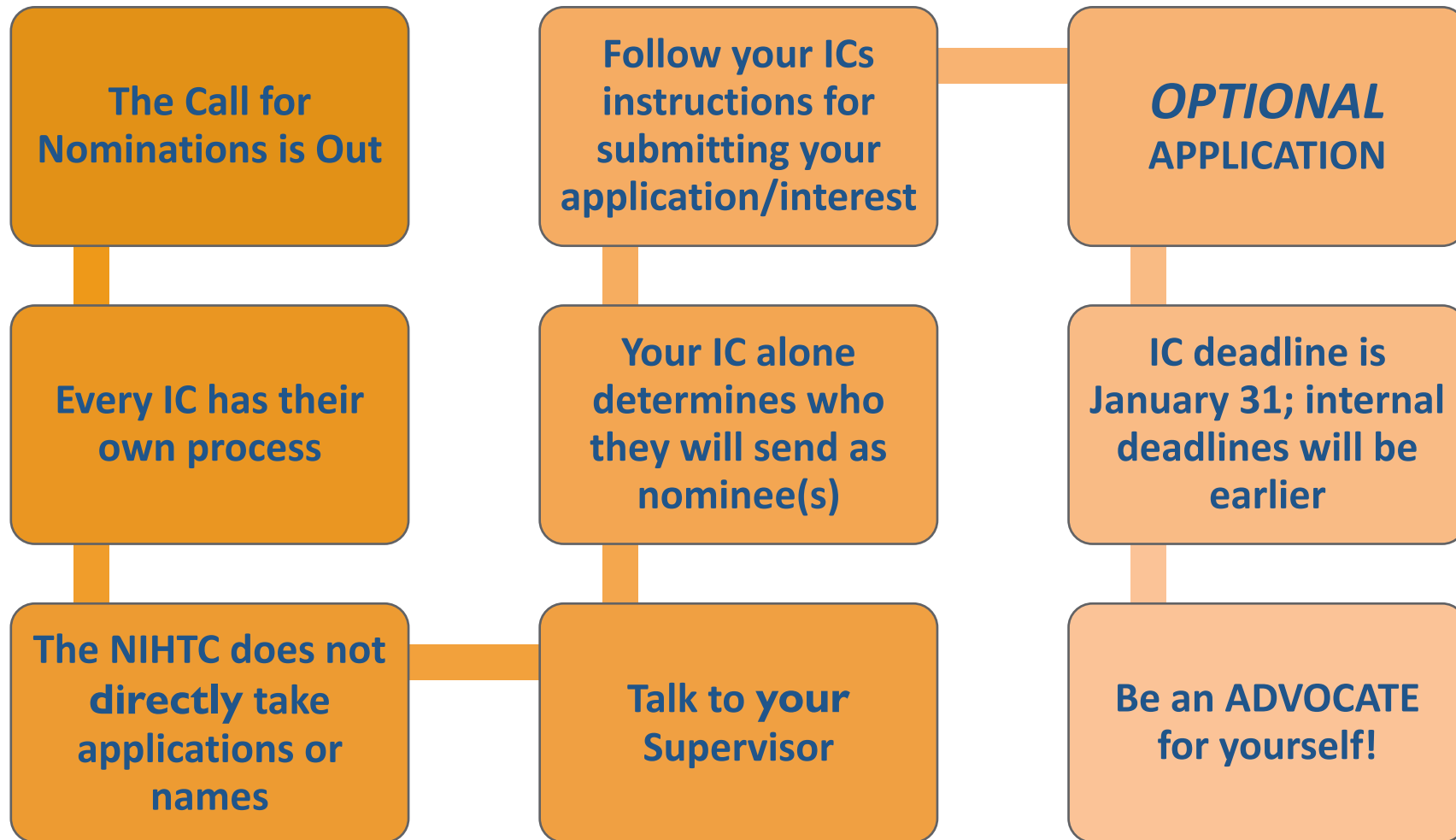
+



Program Alumni



How Do I Get Into the Emerging Talent Program?



NIH Contributors

EDI

Ombudsman

OITE

Cross-OHR
Divisions

OER

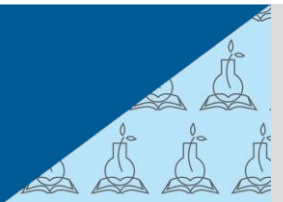
CC

UNITE

NIH Library

OSPMO

Children's
Inn



Support

If you qualify and you're interested...be an advocate for yourself!

If you supervise a GS 5-11 employee, share the opportunity with them.

If you send emails or talk to people at NIH – help spread the word.

If you want to support the program in another way, please feel free to reach out.

Questions/Comments



What you can find on the webpage:

- ETP 2024 dates and topics
- ETP OPTIONAL application
- ETP Program Manager Office Hours times and link
- ETP Info Session Recording and Presentation Slides



Contact Our NIHTC Team:

Julian Brooks (office hours Wed/Fri)

Program Manager, NIHTC

julian.brooks@nih.gov

Pam Welbon

Programs Unit Chief, NIHTC

pam.welbon@nih.gov

Elena Juris

Director, NIHTC

Deputy Director, WSDD

elena.juris@nih.gov

ETP Mailbox: NIHTC-ETP@nih.gov